

BEEVISION 190-XL

DYNAMIC DIMENSIONING & WEIGHING
& BARCODE READING & IMAGE CAPTURE



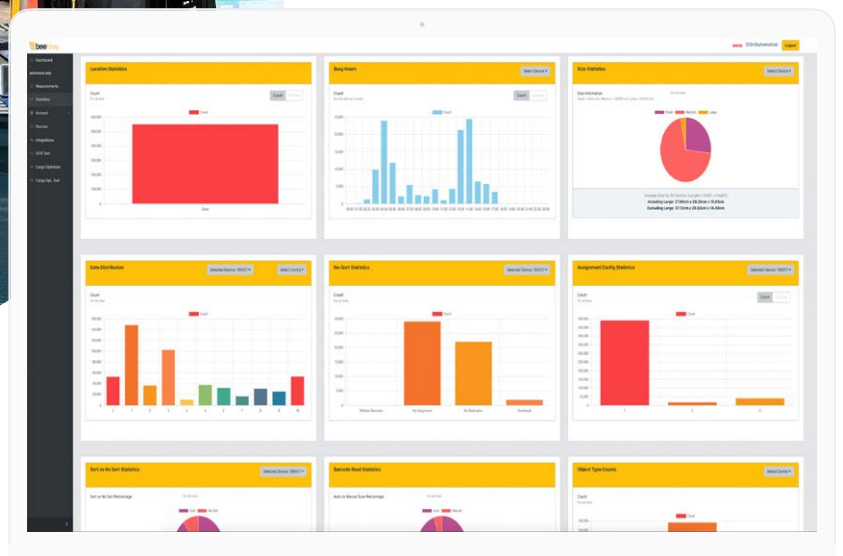
 **bee**VISION

BEEVISION 190-XL

DYNAMIC DIMENSIONING & WEIGHING
BARCODE READING & IMAGE CAPTURE



 Focus on growing your business with BeeVision 190-XL by automating data capture in your warehouse



- All-in-one solution: dimensioning + weighing + barcode reading + image capture
- Plug & Play: No external software or hardware is required
- Seamless API integration
- On-device storage of measurement results and images
- Easy to use interface on touch-screen
- Local web interface available to download results as Excel file
- Can process any shape or any color
- Real volume measurement
- Optionally capture high-quality images of objects
- Optional Extension: BeeHive Cloud Platform to collect, view and download results from web
- BeeHive Cloud also offers AI-based services: bag/box detection, OCR, label detection, receiver address and name extraction from labels
- With BeeHive Cloud, have access to real-time statistics and get daily reports
- Track each web-service request easily on BeeHive Cloud

BEEVISION 190-XL

DYNAMIC DIMENSIONING & WEIGHING
BARCODE READING & IMAGE CAPTURE

BEEVISION 200

High-Performance
Imager Barcode Readers

Light-Curtain Based
Reliable Dimensioning



DIMENSIONING



WEIGHING



BARCODE READING



API



IMAGE

SPECIFICATIONS

BEEVISION 190-XL

System Throughput	Up-to 450 pieces per hour with an average of 50cm object length
Measuring Capability	Regular or Irregular, any color, any surface, non-transparent objects
Min. Measurable Object Dimensions (Typical)	10cm x 10cm x 0.5cm (L x W x H)
Max. Measurable Object Dimensions (Typical)	250cm x 120cm x 120cm (L x W x H)
Measurement Accuracy	0.5cm
Max. Conveyor Speed	0.7m/sec
Max. Weight	0.1kg - 50kg with 0.05kg Interval
Barcode Reading	Wireless Handheld 2D Barcode Scanner
Integration Interface	Web Service API, TCP/IP Socket, File upload to FTP, SFTP or Samba
Data Output	Bounding Box, Length, Width, Height, Real Volume, Weight, Barcode, Image (Optional)
Operating Voltage	230V - 6Kw
Max Current Consumption	15A
Product Dimensions (L x W x H) and Weight	700cm x 120cm x 238cm and 1970kg
Package Dimensions (L x W x H) and Weight	396cm x 211cm x 255cm and 2000kg (2 Packages)